

Invacare® Action® 3 Junior® S (Box Models)

Please contact Invacare EU Export Customer Services on :-
Tel : +33 247 626980 ; Email : serviceclient_export@invacare.com
 Or visit our website : www.invacare.eu.com



Invacare® Action® 3 Junior® S (Box Models)

Aluminium manual folding wheelchair



- Description:**
- Seat height 460 mm
 - Colour: Mat Red
 - Rear wheels 22" x 1.3/8" spoked black tire with quick release
 - Front wheels 5" x 1" black tire (125 x 30 mm)
 - Removable armrests adjustable in height (from 180 mm to 250 mm)
 - Backrest cover adjustable in width and height
 - Reclining backrest height 390 mm
 - Weight: from 15 kg.
 - Maximum user weight: 80 kg.
 - 2-year warranty period excluding wear parts

Date :
 Purchase Order :
 Customer Code :
 Distributor Stamp:

Quantity			EURO
Reclining backrest			
DG1601934	Width 305 mm	Depth 300 mm	572.18
DG1601935	Width 330 mm	Depth 350 mm	
DG1601936	Width 350 mm	Depth 350 mm	

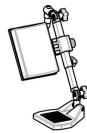
ACCESSORIES (delivered separately)

Think of Bodypoint positioning accessories: belts, harnesses, ankle supports.



0-80° adjustable legrests with footplates - Check a width

AP1601937	305 mm with calf support strap UL=235 to 295 mm	200.49
AP1601938	330 mm with padded calf support UL=275 to 375 mm	200.49
AP1601939	355 mm with padded calf support UL=275 to 375 mm	200.49



Leg rest with calf support

RAMPS

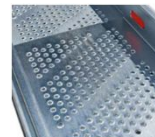
1440530	Fiberglass Folding Mono Ramp Folded dimensions: 2000 x 230 mm 16.3 kg - maximum capacity: 300 kg	1,787.68
1654128	Basic ramp 2 telescopic parts in aluminum and non-slip coating - Folded dimensions: 1210 x 194 mm. 8.8 kg per pair - maximum capacity: 270 kg	402.84
1654129	Quick2go Compact 3-part aluminum telescopic ramp with non-slip coating Folded dimensions: 870 x 237 mm 13.6 kg per pair - maximum capacity: 260 kg	805.69
1654130	Aluminium folding mono ramp Folded dimensions: 1824 x 714 mm 13.9 kg - maximum capacity: 300 kg	426.54



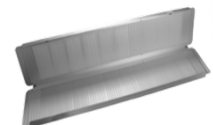
1440530



1654128



1654129



1654130