



Sage 300
Construction and Real Estate



Gain deeper insight into your
business with Sage 300
Construction and Real Estate

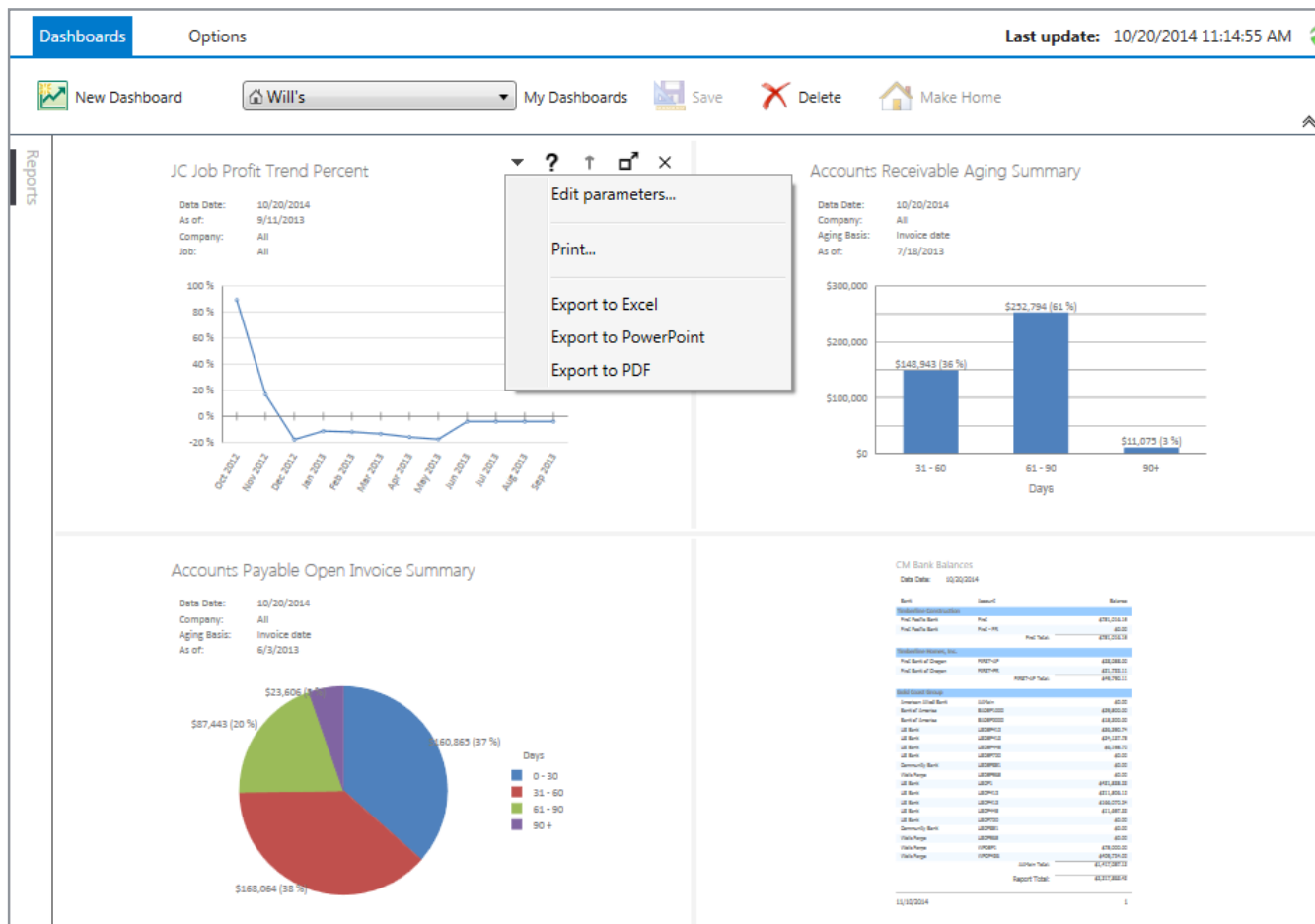
Your employees face issues that impact your company's profitability on a daily basis. These issues include controlling project schedules and budgets, managing labor, and minimizing risk. In order to make the best decisions for your business, they need access to meaningful information in your project accounting system. How can you provide them with real decision-making data?

Sage 300 Construction and Real Estate provides you with the insight you need—when it's needed most. You get quick access to critical data and the ability to make informed decisions to keep projects moving and profits improving. This book explores some of the many ways Sage 300 Construction can help you gain deeper insight into your business.

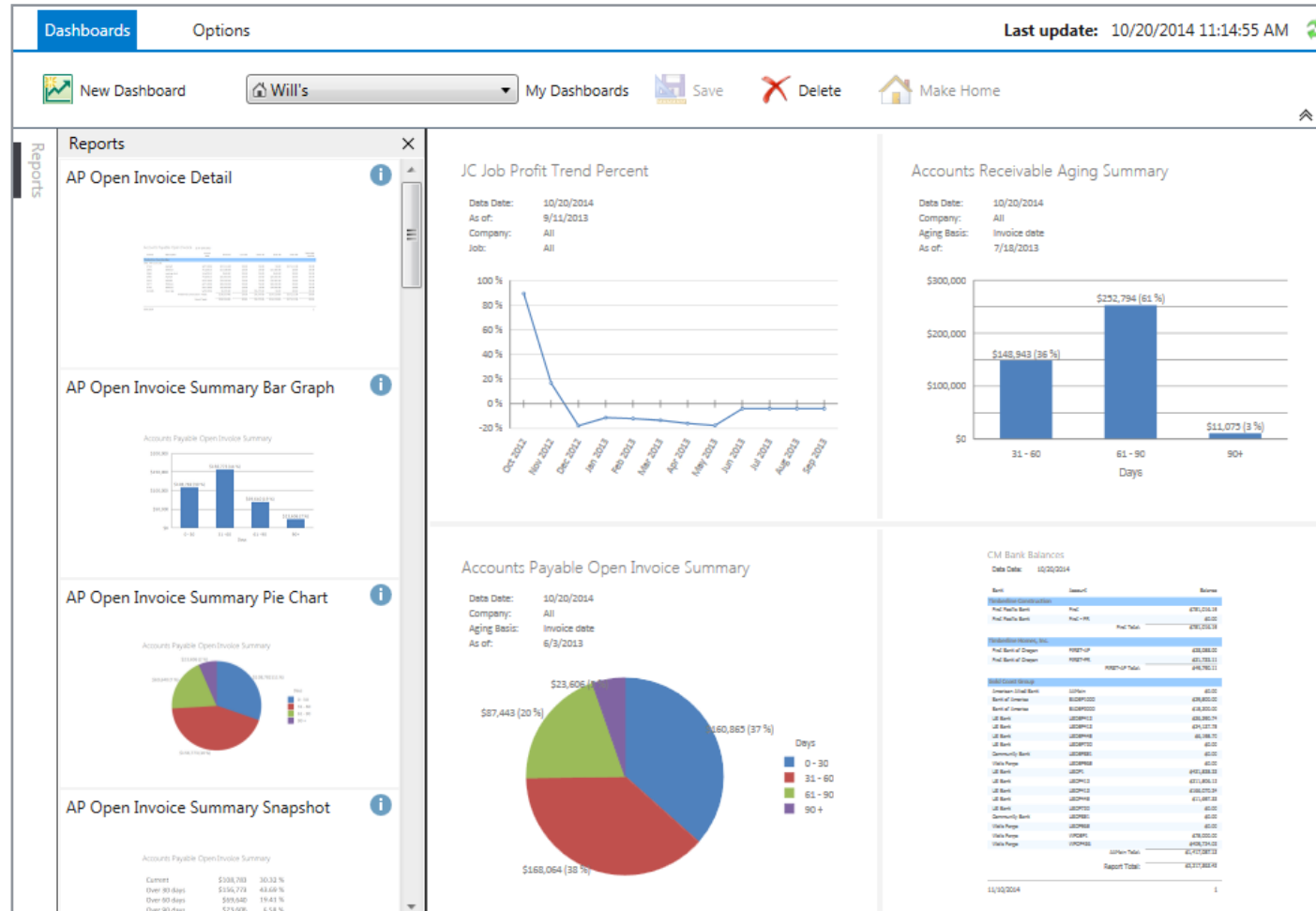
See your business at a glance

The Executive Dashboard provides immediate access to the critical information you need to make informed decisions. With intuitive graphical reports, you can easily monitor trends such as project profitability, property occupancy, or cash flow and identify potential issues before they arise.

Use the Sage 300 Construction and Real Estate Executive Dashboard to drive the decision-making process and deliver the right information to the right people at the right time.



Executive Dashboard

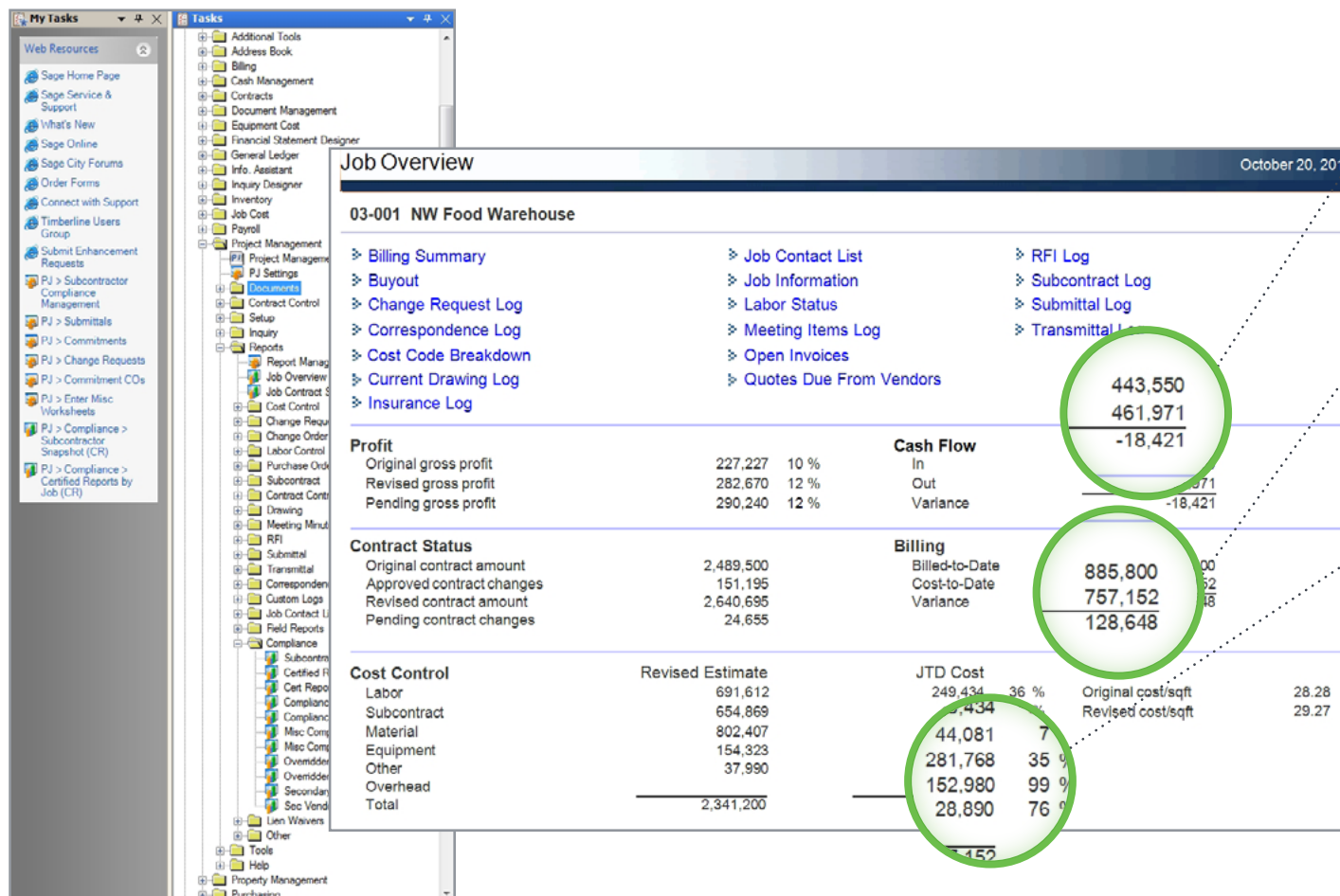


- Secure company information by setting up data views by organizational role.
- Customize your dashboard so you only see the information you need.
- View data across multiple companies when applicable.
- Use Executive Dashboard standalone or in conjunction with Sage 300 Construction and Real Estate.

Get clear, effective reports on the health of your business

Sage 300 Construction and Real Estate offers more than 1,400 prebuilt report formats plus the ability to create your own custom reports. Here are some of the essential reports you will need to run your business efficiently and effectively.

Keep your fingers on the pulse of profitability, cash flow, and billing for your jobs directly from the Sage 300 Construction and Real Estate Desktop.



- Cash flow is negative—take immediate steps to improve.

- The actual cost per square foot is higher than the original estimate—make a note to increase future estimates.

- This project has used 99% of estimated equipment costs—is a change order needed?

Compare your estimated labor units (how much time it will take to perform a task) to what is actually happening with the required labor production report. Make course corrections to stay on budget.

03-001 NW Food Warehouse

Cost Code

Est Factor

JTD Factor

Required Factor

Timberline Construction

Include closed jobs: No

03-001 NW Food Warehouse

Project Manager: Pat Siravo

10/08/2014 Page 1

Cost Code	Description	Unit Desc	Est Hours	Est Units to Place	Est Factor	JTD Hours	JTD Units in Place	JTD Factor	Remaining Hours	Remaining Units	Required Factor
SITEWORK											
2-220	Excavate & Backfill	cuyd	2,766.00	1,525.00	.55	2,697.00	1,350.00	.50	69.00	175.00	2.54
2-510	Asphalt Paving	sqy	315.00	380.00	1.21	341.00	384.00	1.13		4.00	
2-520	Cement Paving	yds	77.00	540.00	7.01	84.00	510.00	6.07		30.00	30.00
CONCRETE											
3-210	Reinforcing Steel	ton	318.00	25.00	.08	296.00	25.00	.08	22.00	1.50	.07
3-310	Structural Concrete	cuyd	748.00	2,278.00	3.05	642.00		3.27	106.00	178.00	1.68
3-345	Concrete Finishing	sqy	1,448.00	104.44	.07	1,376.00		.07	72.00	14.44	.20
3-470	Tilt-Up Precast	lnft	877.00	1,200.00	1.37	847.00		1.24	30.00	153.00	5.00
METALS											
5-310	Steel Decking	sqft	486.00	80,000.00	164.61				486.00	80,000.00	164.61
THERMAL & MOISTURE PROTECTION											
7-510	Built-Up Bitumins Rof	sqy	2,390.00	80.00	.03				2,390.00		.03
DOORS & WINDOWS											

- For each cost code, know the estimated hours, units, and productivity factor and the job-to-date hours, units, and factors.

- See the remaining hours, units, and required productivity factor to meet estimates.

- Spot and correct potentially costly production problems before they develop into overruns.

- Learn the exact productivity required to complete the job within estimates.

Find the information you need

Inquiries give you instant onscreen access to the information you need to make more informed decisions. Use one of the many prebuilt inquiries to quickly search for specific data or create your own customized inquiries using the Inquiry Designer.

Job Overview Inquiry

See your projected cost at complete and projected profit for any job. It's easy to search, select, and filter by job code, description, percent complete, and more.

Job	Description	Original Contract	Pending Changes	Approved Changes	Revised Contract	Total Estimate	Total Commitment
03-001	NW Food	2,489,500.00	24,655.00		2,640,695.00	2,341,200.38	1,603,856.09
03-002	Clackamas	831,930.00	19,425.70		897,210.20	827,931.61	382,071.73
03-003	Fort Wayne Officer's Club	479,300.00	7,500.00		479,300.00	442,347.39	122,922.90
03-004	Metro Bus Stop 47	18,000.00	5,000.00		18,000.00	14,315.00	2,200.00
03-005	Metro Bus Stop 39	18,000.00	5,000.00		18,000.00	14,315.00	2,200.00
03-006	PGE Line						
03-007	Low Inco						
03-008	Rose Gar						
03-009	OHSU Lig						
03-010	Tri-Tech						
03-011	Cordova						

Cost Code	Description	Total Estimate	Job to Date Cost	Variance
1-000	GENERAL CONDITIONS	138,577.36	44,029.89	94,547.47
1-040	Coordination	57,134.58	14,367.34	42,767.24
1-045	Insurance	5,050.00	4,895.00	155.00
1-065	Permits - General	20,239.00	20,239.00	
1-510	Temporary Utilities	14,888.43	4,355.80	10,532.63
1-580	Project Identification	167.20	172.75	5.55-
1-710	Final Cleaning	41,098.15	41,098.15	
2-000	SITWORK	354,078.52	366,318.03	12,239.51-
2-075	Concrete Removal	720.00		720.00
2-140	Dewatering	99,475.83	100,638.68	1,162.85-
2-220	Excavate & Backfill	144,649.07	154,167.12	9,518.05-
2-510	Asphalt Paving	99,003.02	99,297.16	294.14-
2-520	Cement Paving	6,980.60	7,715.07	734.47-
2-900	Landscaping	3,250.00	4,500.00	1,250.00-
3-000	CONCRETE	325,839.28	255,625.49	70,213.79
3-110	Structural Formwork	21,466.12	15,554.26	5,911.86
3-130	Permanent Forms	3,010.85	2,427.72	583.13
3-210	Reinforcing Steel	23,431.69	20,132.46	3,299.23
3-220	Welded Wire Fabric	23,799.00	18,109.47	5,689.53
3-250	Concrete Accessories	1,452.92	403.99	1,048.93
3-310	Structural Concrete	142,722.67	140,627.98	2,094.69
3-345	Concrete Finishing	45,482.43	33,908.44	11,573.99
3-470	Tilt-Up Precast	64,473.60	24,461.17	40,012.43
5-000	METALS	211,766.93	28,444.00	183,322.93
5-210	Steel Joists	132,701.96	28,444.00	104,257.96
5-310	Steel Decking	76,104.50		76,104.50
5-540	Castings	2,960.47		2,960.47
6-000	WOOD & PLASTICS	148,844.72	11,954.34	136,890.38
6-050	Fasteners	569.51		569.51

Job Overview Inquiry—Cost Code Detail

- Drill down to the level of detail that you need to see.
- Print or send to Excel directly from Inquiry window.
- Compare original and revised contract amounts against committed costs in easy-to-view columns.
- Adjust your views and save them for future use.

Profit Summary Inquiry

See your projected cost at complete and projected profit for any job. It's easy to search, select, and filter by job code, description, percent complete, and more.

Job	Revised Contract	Cost At Complete	Projected Profit	% Comp
03-001	2,640,695.00	2,341,200.38	299,494.62	32.00
03-002	897,210.20	827,931.61	69,278.59	22.00
03-003	479,300.00	442,347.39	36,952.61	34.00
03-004	18,000.00	14,315.00	3,685.00	
03-005	18,000.00	14,315.00	3,685.00	
03-006		14,589.11	14,589.11-	
03-007				65.00
03-008				
03-009				
03-010				
03-011				
03-012				
03-014				
03-015				

Cost Code	Description	Total Estimate	JTD Cost	Remaining Estimate
1-000	GENE	138,577.36	44,029.89	94,547.47
1-040	Con	57,134.58	14,367.34	42,767.24
1-045	In	5,050.00	4,895.00	155.00
1-065	Per	20,239.00	20,239.00	
1-510	Temp	14,888.43	4,355.00	10,533.43
1-580	Project	167.20	172.00	-4.80
1-710	Final Cleaning	41,098.15		41,098.15
2-000	SITEWORK	354,078.52	366,318.00	-11,239.48
2-075	Concrete Removal	720.00		720.00
2-140	Dewatering	99,475.83	100,638.68	-1,162.85
2-220	Excavate & Backfill	144,649.07	154,167.12	-9,518.05
2-510	Asphalt Paving	99,003.02	99,297.16	-294.14
2-520	Cement Paving	6,980.60	7,715.07	-734.47
2-900	Landscaping	3,250.00	4,500.00	-1,250.00
3-000	CONCRETE	325,839.28	255,625.49	70,213.79
3-110	Structural Formwork	21,466.12	15,554.26	5,911.86
3-130	Permanent Forms	3,010.85	2,427.72	583.13
3-210	Reinforcing Steel	23,431.69	20,132.46	3,299.23
3-220	Welded Wire Fabric	23,799.00	18,109.47	5,689.53
3-250	Concrete Accessories	1,452.92	403.99	1,048.93

- Click on a specific job so you can drill down to detailed estimates and job-to-date information for each cost code.

- Drill down to a particular cost code to get the category detail; click a cost code to show individual transactions.

- Drill down further to view distributions for each transaction.

- Keep tabs on your total costs to date so you can proactively manage your jobs.

Profit Summary Inquiry—Cost Code Detail

Monitor job activity with simple navigation from the job to the cost codes and detailed transactions.

Vendor Compliance Inquiry

Vendor	Name	City	State	Telephone	Lien Waivers	Certified Reports	Vendor Misc.	Job Misc.	General Liability	Auto Insurance
100	A-1 Electric Company	Tigard	OR	(503)744-3200	Click to See	Click to See	Click to See	Click to See	Expired	Expired
101	Alpha Insulation	Forest Grove	OR	(503)821-1176	Click to See	Click to See	Click to See	Click to See	Expired	Expired
102	Acme Door & Glass Distributors	Portland	OR	(503)245-8162	Click to See	Click to See	Click to See	Click to See	Expired	Expired
103	Ace Drywall	Tigard	OR	(503)858-3838	Click to See	Click to See	Click to See	Click to See	Expired	Expired
104	AAA Insurance and Bonding	Portland	OR	(503)242-5859	Click to See	Click to See	Click to See	Click to See	Expired	N/A
105	Adams Electric			(503)636-3200	Click to See	Click to See	Click to See	Click to See	Expired	Expired
200	B & M Marble, Inc.	Portland	OR	(503)242-1500	Click to See	Click to See	Click to See	Click to See	Expired	Expired
201	Becker Roofing Company	Estacada	OR	(503)675-3200	Click to See	Click to See	Click to See	Click to See	Expired	Expired
202	Beaverton Painting	Beaverton	OR	(503)626-8484	Click to See	Click to See	Click to See	Click to See	Expired	Expired
203	Barth Electric	Beaverton	OR	(503)456-3945	Click to See	Click to See	Click to See	Click to See	Expired	Expired
204	Bronson Signs	Oregon City	OR	(503)650-8454	Click to See	Click to See	Click to See	Click to See	Expired	Expired
205	Beaverton Sand & Gravel	Beaverton	OR	(503)656-2481	Click to See	Click to See	Click to See	Click to See	Expired	Expired
206	City of Beaverton	Beaverton	OR	(503)626-2500	Click to See	Click to See	Click to See	Click to See	Expired	Expired
300	Crocker Electric & Welding	Gresham	OR	(503)520-1000	Click to See	Click to See	Click to See	Click to See	Expired	Expired
301	Cook's Lumber	Tigard	OR	(503)565-6513	Click to See	Click to See	Click to See	Click to See	Expired	Expired
302	Commercial Pest Control	Tigard	OR	(503)626-5575	Click to See	Click to See	Click to See	Click to See	Expired	Expired
400	Donaldson Acoustics	Portland	OR	(503)242-6500	Click to See	Click to See	Click to See	Click to See	Expired	N/A
401	Dallas Tile & Carpet	Hubbard	OR	(503)655-5252	Click to See	Click to See	Click to See	Click to See	N/A	Expired
500	Earhart, Garcia, & Associates	Portland	OR	(503)242-6687	Click to See	Click to See	Click to See	Click to See	N/A	N/A
600	Federal Delivery	San Carlos	CA	(415)443-9878	Click to See	Click to See	Click to See	Click to See	N/A	N/A
601	Ford Metals, Inc.	Oregon City	OR	(503)345-3889	Click to See	Click to See	Click to See	Click to See	N/A	N/A
602	Fullman Flooring	Vancouver	WA	(206)578-9019	Click to See	Click to See	Click to See	Click to See	Expired	N/A
700	George's Excavation	Scappoose	OR	(503)847-6251	Click to See	Click to See	Click to See	Click to See	N/A	N/A
701	Gresham Paint & Supply	Gresham	OR	(503)544-5560	Click to See	Click to See	Click to See	Click to See	N/A	N/A
702	Gales Industrial Products	San Francisco	CA	(415)872-0476	Click to See	Click to See	Click to See	Click to See	Expired	N/A
800	Hanson Plumbing & Irrigation	Portland	OR	(503)244-5552	Click to See	Click to See	Click to See	Click to See	N/A	Expired
801	Hawkin Masonry	West Linn	OR	(503)697-5467	Click to See	Click to See	Click to See	Click to See	N/A	N/A
802	Happy Day Florist	Tigard	OR	(503)644-8599	Click to See	Click to See	Click to See	Click to See	N/A	N/A
1000	Jackson Heating & A/C	Milwaukie	OR	(503)854-6663	Click to See	Click to See	Click to See	Click to See	Expired	N/A
1100	King Temporary Service, Inc.	Portland	OR	(503)242-7810	Click to See	Click to See	Click to See	Click to See	N/A	N/A
1101	Kingsley				Click to See	Click to See	Click to See	Click to See	N/A	N/A
1111	Tufnel				Click to See	Click to See	Click to See	Click to See	N/A	N/A
1200	Larson				Click to See	Click to See	Click to See	Click to See	N/A	N/A

Primary Vendor	Name	Vendor Level	Secondary Vendor Name	Secondary Vendor Relationship	Lien Waiver Type	Status
100	A-1 Electric Company	Primary			Conditional Partial	Outstanding
100	A-1 Electric Company	Primary			Unconditional Partial	Outstanding
100	A-1 Electric Company	Secondary	Sorrento Interiors (NW Portlan	A-1 Electric Compan	Unconditional Partial	Compliant
100	A-1 Electric Company	Primary			Unconditional Partial	Compliant
100	A-1 Electric Company	Secondary	Sorrento Interiors (NW Portlan	A-1 Electric Compan	Unconditional Partial	Outstanding
100	A-1 Electric Company	Primary			Conditional Partial	Outstanding
100	A-1 Electric Company	Primary			Unconditional Partial	Outstanding
100	A-1 Electric Company	Primary			Conditional Partial	Outstanding
100	A-1 Electric Company	Primary			Pre-lien	Compliant
100	A-1 Electric Company	Primary			Conditional Partial	Outstanding
100	A-1 Electric Company	Secondary	Chu, Kathy (Crocker Electric &	A-1 Electric Compan	Conditional Partial	Outstanding
100	A-1 Electric Company	Primary			Conditional Partial	Outstanding
100	A-1 Electric Company	Primary			Unconditional Partial	Outstanding
100	A-1 Electric Company	Primary			Conditional Partial	Outstanding

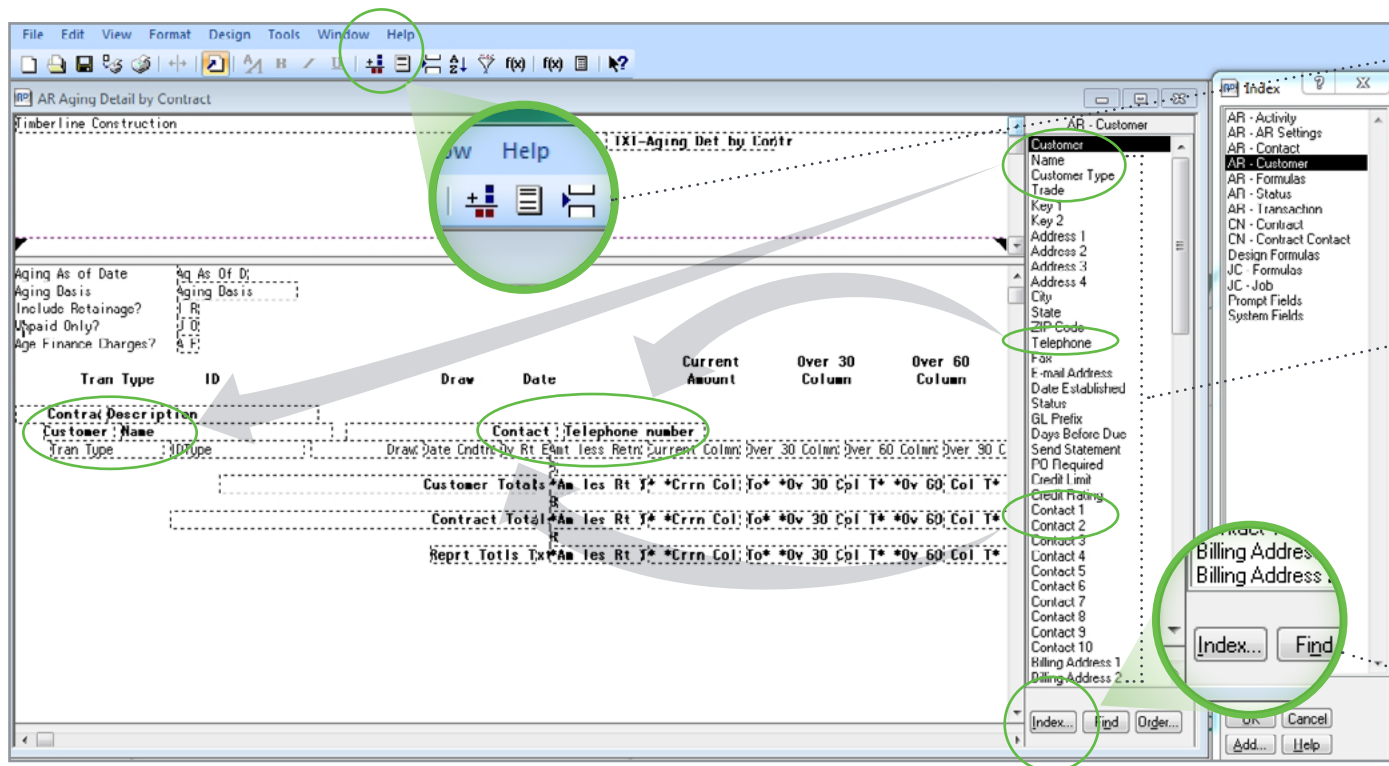
- Minimize your exposure to risk of subcontractor and vendor noncompliance with the powerful Vendor and Job compliance inquiries (available in the Accounts Payable and Project Management modules).

- Drill down to get a quick view of insurance certificates, expected lien waivers, certified reports, and other compliance items across your jobs or for a specific vendor and secondary vendors.

Design the reports you need—using skills you already have

Report Designer

With Sage 300 Construction Report Designer, you can get started right away using prebuilt reports—no changes are needed to get up and running. To meet changing requirements, you can easily modify these prebuilt reports or create your own. Simply point, click, drag, and drop fields to create your own customized reports. Plus, you can give each person in your organization a personalized report menu containing the reports he or she needs for the job.

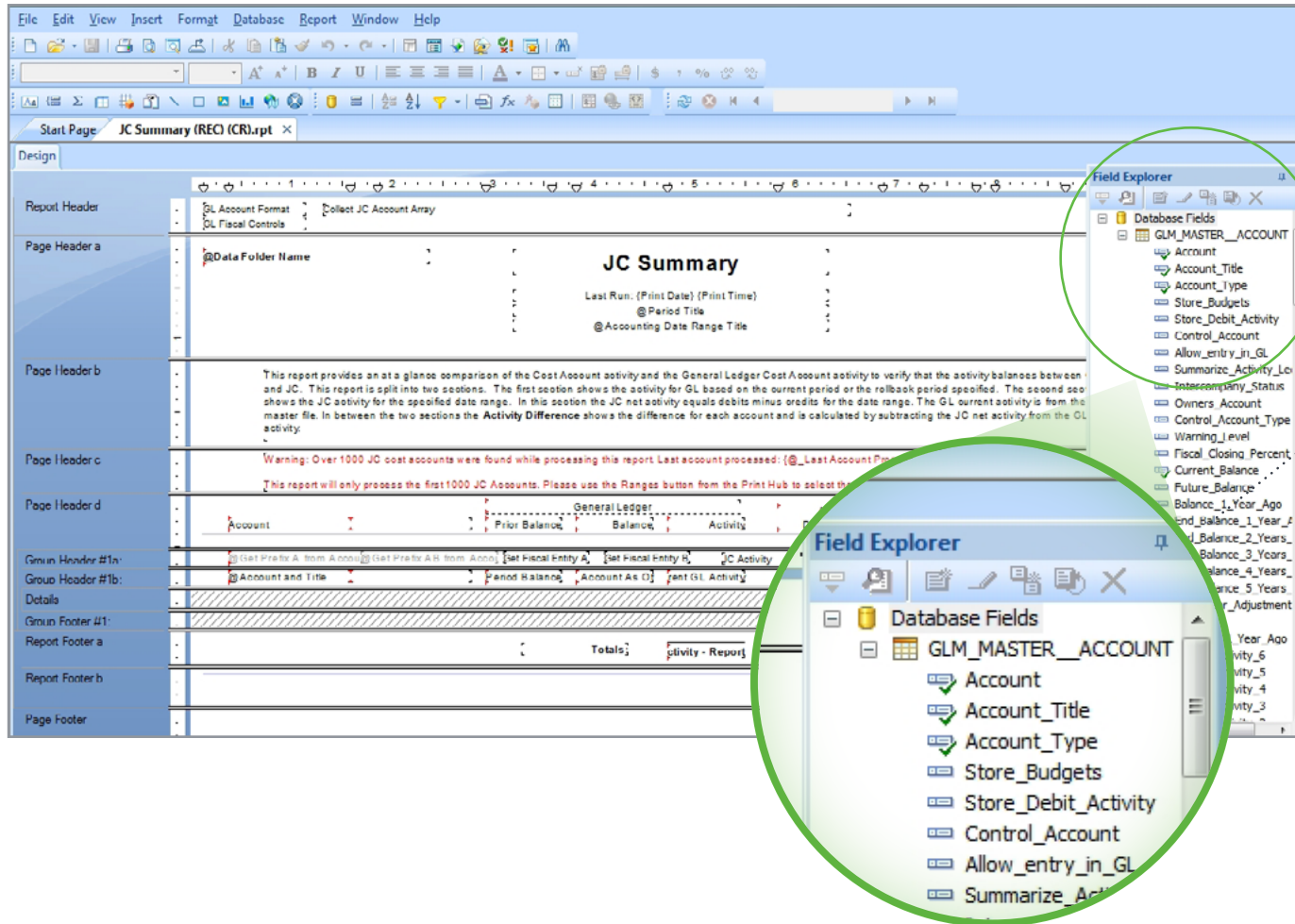


- Choose from a list of included formulas or create your own.
- Use quick and intuitive drag-and-drop tools to modify or create Sage 300 Construction and Real Estate reports.
- With minimal training and documentation you can take control of your data and get the reports you need the way you want to see them.
- To select additional fields, use the Index button and a list of Sage 300 Construction and Real Estate records used by the report appears onscreen.

Information can be accessed from multiple data areas including accounts receivable, billing, and job cost.

SAP® Crystal Reports

If you have in-house SAP Crystal Report design skills, you can use or modify reports to suit your needs.

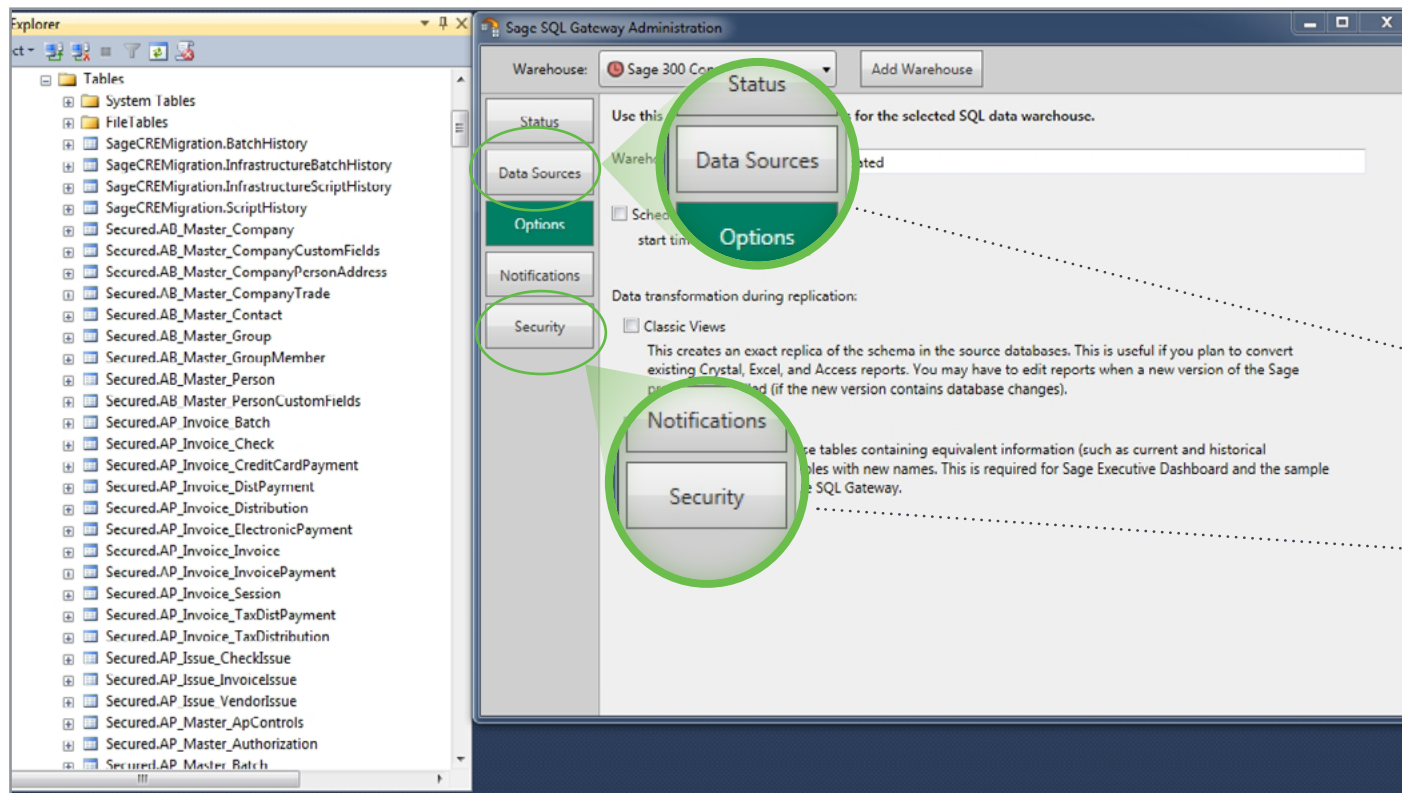


- Use SAP Crystal Reports to create and customize presentation-quality reports from your Sage 300 Construction and Real Estate systems data.

- Get one-click access to Sage 300 Construction and Real Estate data and built-in or customized formulas.

Consolidate organizational data

Consolidate data from multiple company sources using Sage SQL Gateway so you can see a more holistic view of your organization. If you have in-house SQL skills, you can develop reports using SAP Crystal Reports or SQL Server Reporting Services, or you can modify Sage 300 Construction reports to use SQL data when desired.



- Copy and maintain your Sage 300 Construction and Real Estate data in a synchronized SQL database by using the Sage SQL Gateway.

- See reports across your entire organization when using multiple companies.

- Secure your data throughout your organization by role.

Proactive alerts

Your employees spend a lot of time entering many details, documents, and data into your business management system. How do you get this information out of the system in a way that automatically informs people what they need to do every day? Sage MyAssistant automatically generates reports, spreadsheets, documents, and email alerts, proactively distributing information to those who need it so they can keep all phases of a project or property on time and on budget.

Create alerts with Sage MyAssistant

The screenshot shows the Sage MyAssistant Designer interface. The top ribbon includes tabs for File, Home, View, and Reports. The Home tab is active, showing various task management icons. Three icons are circled in green: 'Run', 'Run and Send', and 'Delete'. Below the ribbon, there is a search bar and a 'Category' dropdown. A table of tasks is displayed, with one task selected: 'Jobs over budget'. This task is associated with the 'Cost Control' category and has 1 notification. The task details table shows the following data:

Job	Description	Original Estimate	Approved Changes	Total Estimate	JTD Cost
03-006	PGE Line WO#345	0.00	0.00	0.00	14,589.11

Below the task details, there is a list of tasks with their categories and notification counts:

Task Name	Category	Notifications	Last Updated
JC Cost Codes that are over budget based on percent complete	Cost Control	0	
Jobs missing a project manager email address	Job Setup	0	
Jobs missing a Superintendent email address	Job Setup	0	
Jobs over budget	Cost Control	1	9/25/2014
Jobs over budget by a specified percent	Cost Control	0	
Jobs where a GL Prefix has not been entered	Job Setup	0	
Jobs where a Payroll Local has not been entered	Job Setup	0	
Jobs where a Payroll state has not been entered	Job Setup	0	
Jobs where a Payroll WC group has not been entered	Job Setup	0	
Jobs where a retainage reduction might be needed	Cost Control	0	
Jobs where Committed costs are greater than the Estimate	Cost Control	0	

- Create tasks to automatically generate and send reports inside and outside of your organization.

- Attach reports from Sage 300 Construction and Real Estate or SAP Crystal Reports and specify the information that should be included.

- Drag and drop data fields to include in the body of the email.

Proactively distribute reports by schedule, task, or on demand

Specify the action that should be taken when the condition is met.

General Information
Condition
Customize Condition
Schedule
Email
Additional Information
Notification Options

File Home Insert View Format Text Design Table Table Layout

Font Paragraph Number Names Attach Include Grid Preset Values Define Formula Date Format Paste Cut Copy Clipboard

Email Addresses

To: alex.lifeson@sage.com

Cc:

Subject: Jobs over budget

Attachments: Job Cost Summary

Drag a column header here to group by that column

Job	Description	Original Estimate	Approved Changes	Total Estimate	JTD Cost
XXXXXXXX	XXXXXXXX	9,999.99	9,999.99	9,999.99	9,999.99

Drag columns to include Totals or choose the SUM option from the ribbon.

☒ Include above list in email

Search...

- > JC Job
- > AB Company
- > AB Company Custom Fields
- > AR Contact
- > AD Person
- > AB Person Custom Fields
- > AP Authorization
- > AP Check (Master)
- > AP Vendor
- > AR Customer
- > AR Customer Custom Fields

OK Cancel

- Generate reports using Sage 300 Construction and Real Estate and SAP Crystal Reports. Attach them to notifications that can be sent throughout your organization.

Easy reports and financials using Excel

Microsoft® Excel is an easy-to-use tool with which most of your office personnel will have experience. Using Sage Office Connector, you can create reports and analyze data in Excel including real-time information from Sage 300 Construction and Real Estate. Office Connector allows you to query, report, and move data back and forth between Excel and Sage 300, ensuring you always have the most up-to-date information.

Past 6 Months (Actuals)										24-Month Forecast -->									
Job-Level Revenue & Cost Forecast																			
Starting Date: 12/1/2012																			
Summary																			
Job	Description	Type	Contract Estimate	Job To Date	Forecast	13-Jan	13-Feb	13-Mar	13-Apr	13-May	13-Jun	13-Jul	13-Aug	13-Sep	13-Oct	13-Nov	13-Dec	14-Jan	14-Feb
03-001	NW Food Warehouse	Revenue	2,489,500	885,000	2,489,500	29,500	130,000	238,600	353,800	133,900	325,000	325,000	256,000	255,000	255,000	255,000	255,000	255,000	255,000
		Cost	(2,262,273)	(757,652)	(2,247,652)	(26,665)	(109,721)	(212,412)	(285,711)	(123,141)	(190,000)	(175,000)	(175,000)	(400,000)	(400,000)	(400,000)	(400,000)	(400,000)	(400,000)
		Net	227,227	127,348	241,848	2,835	20,279	26,188	68,089	10,759	135,000	150,000	81,000	(145,000)	(145,000)	(145,000)	(145,000)	(145,000)	(145,000)
03-002	Clackamas Office Park #1	Revenue	831,930	122,000	831,930	-	-	-	-	-	-	-	-	-	-	-	-	-	-
		Cost	(777,485)	(170,558)	(794,558)	-	-	-	-	-	-	-	-	-	-	-	-	-	-
		Net	54,445	(48,558)	37,372	-	-	-	-	-	-	-	-	-	-	-	-	-	-
03-003	Fort Wayne Officer's Club	Revenue	479,300	41,425	491,425	-	-	-	-	-	-	-	-	-	-	-	-	-	-
		Cost	(442,347)	(149,440)	(478,440)	-	-	-	-	-	-	-	-	-	-	-	-	-	-
		Net	36,953	(107,015)	12,985	-	-	-	-	-	-	-	-	-	-	-	-	-	-
03-006	PGE Line WO#345	Revenue	-	110	110	-	-	-	-	-	-	-	-	-	-	-	-	-	-
		Cost	-	(14,589)	(14,589)	-	-	-	-	-	-	-	-	-	-	-	-	-	-
		Net	-	(14,479)	(14,479)	-	-	-	-	-	-	-	-	-	-	-	-	-	-
03-009	OHSU Lighting Renovation	Revenue	160,000	132	160,132	-	-	-	-	-	-	-	-	-	-	-	-	-	-
		Cost	(53,150)	-	50,000	-	-	-	-	-	-	-	-	-	-	-	-	-	-
		Net	106,850	132	210,132	-	-	-	-	-	-	-	-	-	-	-	-	-	-
03-010	Tri-Tech Fab Lab	Revenue	-	-	-	-	-	-	-	-	-	-	-	-	-	-	-	-	-
		Cost	-	(111)	(111)	-	-	-	-	-	-	-	-	-	-	-	-	-	-
		Net	-	(111)	(111)	-	-	-	-	-	-	-	-	-	-	-	-	-	-
03-011	Cordova Middle School	Revenue	-	1,000	1,000	-	-	-	-	-	-	-	-	-	-	-	-	-	-
		Cost	-	-	-	-	-	-	-	-	-	-	-	-	-	-	-	-	-
		Net	-	1,000	1,000	-	-	-	-	-	-	-	-	-	-	-	-	-	-
03-014	Downtown Supermarket	Revenue	-	3,264	3,264	-	-	-	-	-	-	-	-	-	-	-	-	-	-
		Cost	-	-	-	-	-	-	-	-	-	-	-	-	-	-	-	-	-
		Net	-	3,264	3,264	-	-	-	-	-	-	-	-	-	-	-	-	-	-
Company Totals																			
	Revenue		3,960,730	1,053,731	3,977,361	29,500	130,000	278,875	444,900	163,456	475,000	561,000	610,000	595,000	494,930	337,700			
	Cost		(3,535,255)	(1,091,350)	(3,485,350)	(26,665)	(117,462)	(251,730)	(390,682)	(134,811)	(325,000)	(340,000)	(615,000)	(500,000)	(414,000)	(200,000)			
	Net		425,475	(40,884)	488,746	2,835	20,279	27,145	64,218	10,759	150,000	221,000	195,000	95,000	180,930	137,700			
Net Projected Income																			
			425,475	(40,884)	488,746														

- Harness the power of Microsoft Excel and the extensive data in Sage 300 Construction and Real Estate to analyze, forecast, and update your data directly from Excel.
- Record or update all of your job-level projections using actual to-date values and forecasts in Excel.
- Get insight into current and future trends and use data to make financial and project management decisions.
- Store future projections in Sage 300 Construction and Real Estate and make changes from within Excel.

If you'd like to learn how to create and analyze reports and hear best practices, check out the many training options at Sage University. For a demo, contact your authorized Sage business partner or call 800-628-6583.