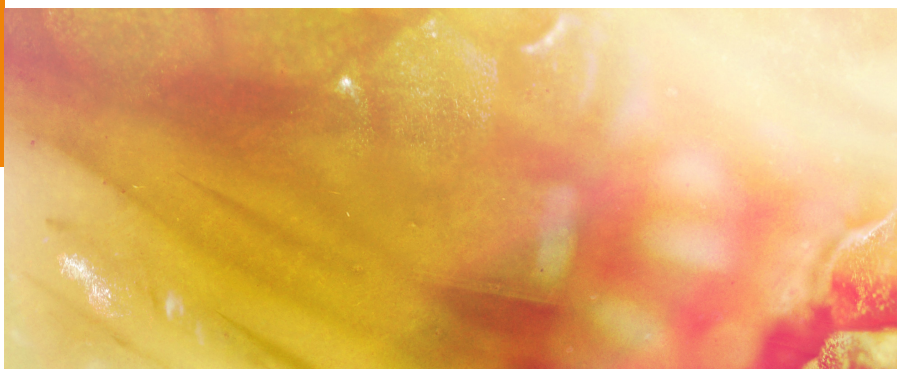


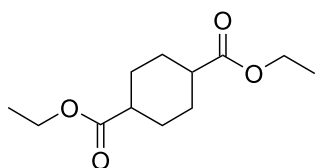
FRUITY

CHEMICAL SYNTHESIS

1,4-Cyclohexanedicarboxylic acid, diethyl ester



CAS NUMBER 0072903-27-6  
REACH NUMBER 01-0000016412-79  
FEMA NUMBER



### OLFACTIVE DESCRIPTION

Fruity, raspberry, apple, pineapple, ethereal.

A bright fruity, raspberry, apple note which provides incredible volume to perfume compositions.

FRUCTALATE® shows remarkable boosting performance, long lastingness and fruity lift. The main effect and profile performance is in composition, much better than on a blotter!

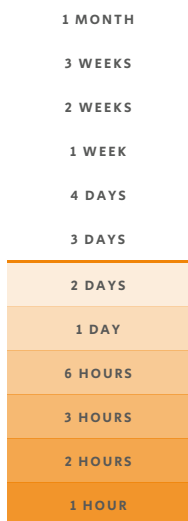
### PERFUMERY USAGE

Excellent in a fruity, pineapple or citrus composition where it can be used at high dosage. At low dosage, it enhances the overall profile of the formula and gives a real strawberry effect.

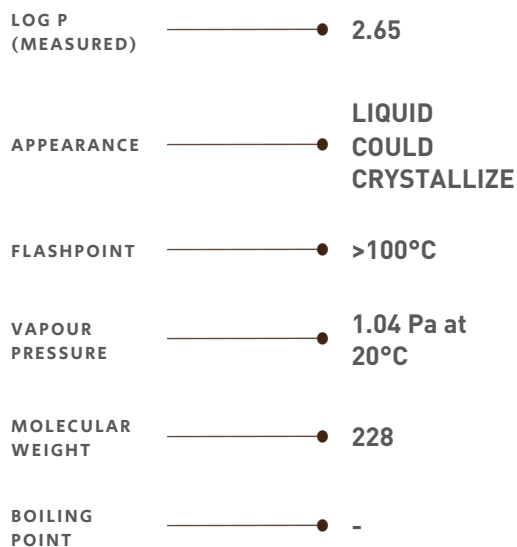
Very stable, FRUCTALATE® is the ultimate fruity enhancer in all type of applications, including Agarbattis (incense sticks). Performs extremely well in Home Care applications.

### TENACITY

Lasts 2 days on a smelling strip



### PHYSICO-CHEMICAL PROPERTIES



### STABILITY & PERFORMANCE

RECOMMENDED APPLICATIONS	STABILITY	CONCENTRATION AVG - MAX	SUBSTANTIVITY & REMARKS	
FINE FRAGRANCES	■■■■■	0,05% - 0,2%	TOP AND HEART NOTE	
SHAMPOO	■■■	0,5% - 2%	WET ■■■	DRY ■■
SHOWER GEL	■■■	0,4% - 2%	BLOOM ■■■	
SOAP	■■■	0,7% - 2%	FOAM ■■■	DRY HAND ■■
DETERGENT	■■■	2% - 17%	WET ■■■	DRY ■■
SOFTENER	■■■	0,6% - 3%	WET ■■■	DRY ■■■
APC	■■■	1% - 4%		
CANDLE	■■■	4% - 12%	COLD WAX ■■■	BURNING ■■■

DID YOU KNOW ?

Our GRANNY SMITH BASE is one of the iconic Firmenich base containing FRUCTALATE®.